

INDUSTRIAL - AQUEOUS PARTS CLEANER

OPERATION & INSTRUCTION MANUAL

EM80

115 Volt or 230 Volt Pump

With 230 or 460 Volt Heater

I. Introduction

A. Manufacturer's Statement

This manual will provide you with important information about the Aqueous Parts Cleaners and will instruct you on how to use this equipment in a safe manner.

The information contained in this manual is necessary for the safe, proper setup and operation of your Aqueous Parts Cleaner.

Keep this manual, along with the Material Safety Data Sheets (MSDS) for the solution in use, within easy reach of the operator of this parts cleaner.

The equipment described in this manual is subject to change. The manufacturer reserves the right to change equipment at any time as part of normal product improvement. Some improvements may have been made after this manual was printed. For the latest information on your equipment, contact the manufacturer.

B. General Information



CAUTION

**READ AND UNDERSTAND ALL LABELS, MSDS, AND
THIS INSTRUCTION MANUAL BEFORE USE.**

The Industrial Aqueous Parts Cleaner is an economical, safe, and innovative system designed to clean parts, using an aqueous based solution. Aqueous solutions, when used to clean grease and oil, must be disposed of properly. Consult your local environmental management agency for additional guidance and other potentially hazardous materials compliance requirements.

Install your parts cleaner on a flat, level surface in an area provided with adequate ventilation. Avoid repeated or prolonged breathing of vapors. Do **NOT** use compressed air to dry parts as this may cause a high concentration of vapors in the immediate area. Local exhaust ventilation should be used in areas of high vapor concentration. Provisions for determining and maintaining adequate ventilation are the responsibility of the operator.

Make sure the parts cleaner is connected to a properly grounded power source. Check serial plate for power requirements.

Do **NOT** allow the parts cleaner to operate unattended.

II. Safety Instructions and Information

Complete safety in use is dependent upon proper use and handling of the parts cleaner in your workplace.

It is important that you follow the instructions provided in this manual. If you fail to read, understand, and follow all of the procedures in this manual, you may cause or suffer personal injury.

DO NOT OPERATE ELECTRICAL EQUIPMENT INSIDE OF PARTS CLEANER.



CAUTION

**USE ONLY WATER-BASED CLEANING SOLUTIONS
DO NOT USE MINERAL SPIRITS**

This equipment is designed for use only with Aqueous Based Solutions. Do **NOT** add any other chemicals to the cleaning agent including, but not limited to, kerosene, fuel oil, gasoline, or chlorinated solutions. The use of any other solutions could potentially cause a hazardous condition.



CAUTION

**DO NOT ALLOW HEATER TO OPERATE UNATTENDED FOR
LONG PERIODS, SUCH AS EVENINGS OR WEEKENDS.**

Avoid contact with eyes or skin. Wear protective eyewear, gloves, and clothing.

Operation should be conducted in a manner, which prevents splashing, or spillage. Any spills should be promptly and properly cleaned up. Soak up all spills with absorbent material. Remove and dispose of all soaked material in accordance with regulatory requirements.

This unit is **NOT** intended for outdoor operation.

Do **NOT** leave solution-soaked rags in parts cleaner or in uncovered containers.

Do **NOT** obstruct the cover. It is designed to close automatically in the event of a fire. The safety link and cover closing mechanism must be intact. Do **NOT** substitute with any other type of cover positioning device. Do **NOT** leave large objects in the parts cleaner or hang anything on the cover that could prevent the cover from closing in the event of a fire.

Do **NOT** place heavy objects on edges or front of sink. Although this parts cleaner is designed to be stable, uneven weight distribution could cause a hazardous condition.

Do **NOT** contaminate cleaning solutions with gasoline, alcohol or flammable liquids.

When cleaning carburetors or other fuel supplying components: remove all gasoline into a proper disposal container before placing the component into the parts cleaner.

Do **NOT** spray aerosols into or around this machine. Install the equipment in an area away from heat, sparks, and open flame. Never put hot parts into the solution.

Do **NOT** use compressed air to dry parts. Be sure parts, especially brake parts, are completely dry prior to reassembly.

Turn unit "OFF" and close lid when equipment is not in use. This will reduce evaporation.

A. Important Safety Instructions

1. Read all instructions.
2. Care must be taken as burns can occur from touching hot parts.
3. Do not operate equipment with a damaged cord or if the equipment has been dropped or damaged – until it has been examined by a qualified service person.
4. If an extension cord is necessary, a cord with a current rating equal to or more than that of the equipment should be used. Cords rated for less current than the equipment may overheat. Care should be taken to arrange the cord so that it will not be tripped over or pulled.
5. Always unplug equipment from electrical outlet when not in use. Never use the cord to pull the plug from the outlet. Grasp plug and pull to disconnect.
6. To reduce the risk of fire, do **NOT** operate equipment in the vicinity of open containers of flammable liquids (gasoline).
7. To reduce the risk of electric shock, do **NOT** use on wet surfaces or expose to rain.
8. Use only as described in this manual. Use only manufacturer's recommended attachments.
9. **ALWAYS WEAR SAFETY GLASSES.** Everyday eyeglasses only have impact resistant lenses, they are not safety glasses.
10. Do **NOT** operate any electrical equipment inside sink or vat.
11. Do **NOT** use light bulbs rated over 40 watts.
12. Do **NOT** smoke, eat or drink in the work area.
13. Do **NOT** modify these machines.
14. Do **NOT** operate this unit in any manner that will cause splashing or cause mist to form.
15. Use only aqueous solution.
16. Adjust flexible nozzle or flow-thru brush so solution is directed to inside the sink only.
17. On the Control box, set the breaker switches to **OFF** before plugging in unit.
18. In any emergency, turn off the unit.
19. These parts washers employ a safety feature called a fusible link that holds the cover open during use. Do **NOT** modify, alter, or obstruct the operation of the fusible link.
20. Keep cover closed whenever unit is not in use.
21. Do **NOT** remove fluid from this equipment or it may cause malfunction or unsafe conditions.

SAVE THESE INSTRUCTIONS

B. Service

Call your representative should your parts cleaner need service and always unplug unit when servicing.

Inspect and keep in good working order the power cord and all electrical components. If components show signs of damage or wear replace immediately. All work should be done by a trained technician.

Do **NOT** replace pump before unplugging unit and letting it completely cool down.

Do **NOT** replace fusible link with any other device to hold lid up. If fusible link should fail, for any reason, call your representative immediately.

C. Fire

This equipment is designed for use only with Aqueous Based Solutions. Do **NOT** add any other chemicals to the cleaning agent including, but not limited to, kerosene, fuel oil, gasoline, or chlorinated solutions. The use of any other solutions could potentially cause a hazardous condition.

Maintain the liquid level within the indicated operating range.

For your protection, a fusible link automatically closes the cover of the parts cleaner in the event that a fire occurs in the sink work area. The closed cover contains and smothers the fire inside the sink. Do **NOT** leave large objects in the parts cleaner or hang anything on the cover that could prevent it from closing in the event of a fire. Do **NOT** replace fusible link with any other device to hold cover up.

IN CASE OF FIRE: Use a Type ABC or Type BC fire extinguisher. Do **NOT** use water. Contact your local fire department.

IN AN EMERGENCY, UNPLUG THE ELECTRICAL SUPPLY TO THE UNIT.

D. First Aid (Medical instructions)

Please note that these First Aid Precautions are for uncontaminated cleaning solutions only. Once the solution has been contaminated (i.e. with oil, grease, antifreeze, etc.), safety precautions should be adjusted according to the type of contaminant.

1. **EYES:** Contact may cause slight to moderate irritation. **For direct contact, flush eyes with water for 10-15 minutes or until the material has been removed; be sure to remove contact lenses, if present, and to lift the upper and lower lids during rinsing. If irritation from vapors or mists develops, move victim into fresh air. Get medical attention if irritation persists.**
2. **SKIN:** Prolonged or repeated contact tends to remove skin oils, possibly leading to dermatitis. **Wash skin with soap and water. Remove contaminated clothing, rinse shoes and launder clothing before reuse. If irritation or pain develops or persists, seek medical attention.**
3. **INHALATION (Breathing):** Prolonged exposure to concentrate-mist or vapor may cause mild irritation of nasal passages or throat. **Remove to fresh air immediately. Do not leave victim unattended. Get medical attention if irritation persists.**

4. **INGESTION (Swallowing):** (Uncontaminated cleaning solution) **Drink 4 to 8 ounces of water and seek medical attention. DO NOT** induce vomiting.

E. Environmental

1. **Avoid spilling solution.** Spilled solution can create slippery conditions, clean it up immediately. Close off area to traffic. Wear appropriate personal protective equipment to prevent eye and skin contact. Consult the Material Safety Data Sheet for instructions on clean up and disposal.
2. **Contain leaks promptly.** Notify local environmental authorities if necessary.
3. **Aqueous solutions, when used to clean grease and oil, must be disposed of properly. Consult your local environmental management agency for additional guidance and other potentially hazardous materials compliance requirements.**
4. **For further information consult the Material Safety Data Sheet provided by the solution supplier.**

III. Installation

- A. Position equipment on a hard level surface in a well-ventilated area.
- B. Check to make sure that the rollers are on the roller guides. The rollers are located inside of the machine on the back of the lift.
- C. Mount the cylinder housing to the machine, and secure with four 10-32 screws. **CAUTION:** Make sure not to pinch any air lines.
- D. Connect an air supply line of **80-120 PSIG (5.5-8.3bar)** to the air inlet on the back of the control box.
- E. Turn the agitation selector switch to the up, down, and agitate positions to make sure the machine operates correctly.
- F. Fill solution reservoir to the correct level. This equipment is designed for use only, with Aqueous Based Solutions. In some cases it may be desirable to use Bioremediation technology to reduce waste. This equipment is suitable for use with these solutions. The microbes used in these systems require heat to remain active. In cases where use of this technology is desirable contact the manufacturer for additional information on the use and maintenance of this equipment. Do not use Flammable or Combustible solutions. Do not add any other chemicals to the cleaning agent including, but not limited to, kerosene, fuel oil, gasoline, or chlorinated solvents. The use of any other solvents could potentially cause a hazardous condition.

Capacity Model AL80AQ
Minimum fill: 48 gal. (182 L.)
Maximum fill: 80 gal. (303 L.)

G. Power requirements:

- For the **pump** to function properly, it must be plugged into the receptacle on the back of the control box (right side of the machine). The power cord from the control box must be connected to a properly grounded power source. **Check serial plate for power requirements.**

115 Volt pump: 115 volt, 1 amp, 60 Hz, 1 PH

230 Volt pump: 230 volt, .5 amp, 50 Hz, 1 PH

- Connect the power cord from the **heater module** to a properly grounded power source. **Check the serial plate for power requirements:**

EM80 AQ 230 = 27.3 amp, 230 volt, 50/60 Hz, 1 PH

EM80 AQ 460 = 13 amp, 460 volt, 50/60 Hz, 1 PH

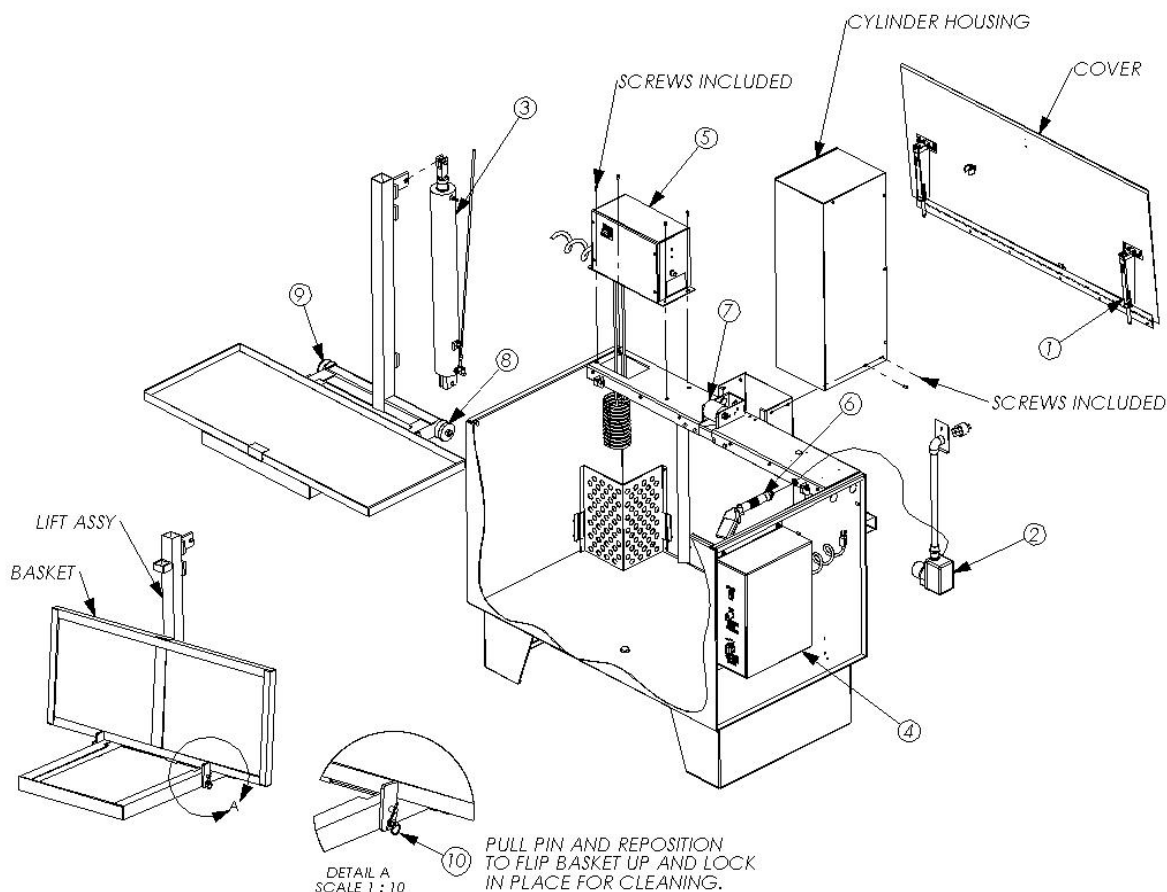
H. Weight capacity for this parts cleaner is **250LBS**. **Do not exceed rated load.**

IV. Operation

- Turn on the heater control switch, at the beginning of each workday or shift. Allowing the solution temperature to rise will aid in the cleaning efficiency.
- Avoid prolonged contact with hands. Use gloves or barrier cream.
- Wear protective safety glasses suitable to prevent solution splashing into eyes.
- Wear a protective apron or garment to avoid absorption of solution into clothing.
- Open the cover.
- Turn the control valve to the **UP** position.
- Load parts to be cleaned. Maximum load capacity 250lbs. **CAUTION: DO NOT** drop parts onto the platform.
- Turn the control valve to the **DOWN** position and allow the basket to lower the parts into the fluid. The basket can be left in this position to simply soak parts without agitation, be sure to close the lid to reduce evaporation.
- When the basket is completely lowered, turn the selector valve to the **AGITATE** position.
- To adjust the speed of the platform, pull up on the agitation speed control valve and turn the valve to increase or decrease the speed. When the desired speed is selected, press down on the speed adjustment knob to lock in place.
- Close the lid, and allow the parts to agitate.
- When done agitating, open the lid, and turn the control valve to the **DOWN** position.
- When the basket is completely lowered, turn the selector valve to the **UP** position.
- If any final detail cleaning is required, grab the parts brush, and turn on the pump control switch.

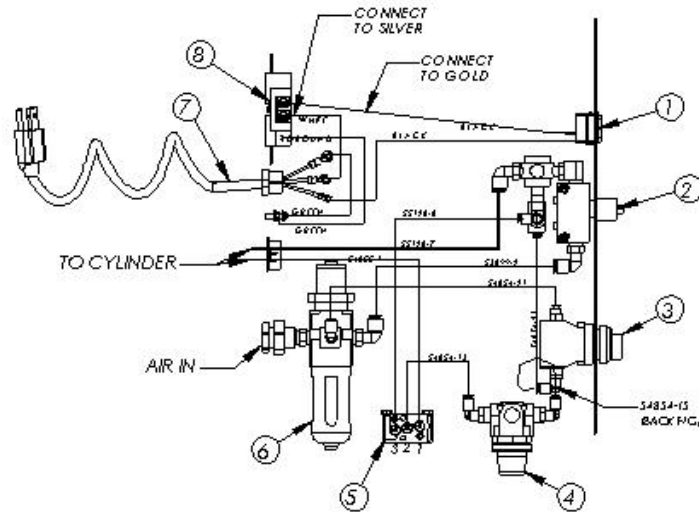
- O. Do any cleaning necessary, and turn off pump control switch when operation is complete.
- P. Allow parts to drain in parts cleaner prior to removal. Be sure parts, especially brake parts, are completely dry before reassembling.
- Q. Close the lid to reduce evaporation and heat loss.
- R. Turn off heater control switch at end of daily use. Do not allow the heater to operate unattended for long periods, such as evenings or weekends.

V. Parts Breakdown

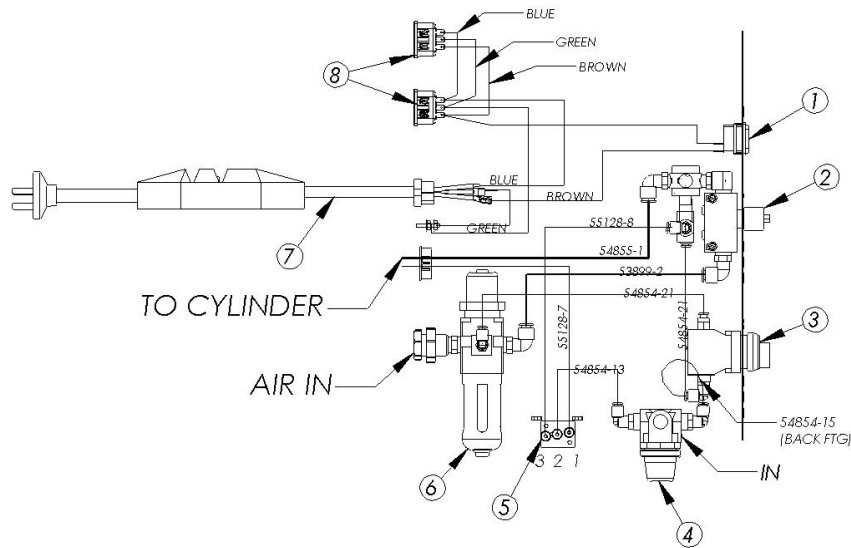


	EM80 115V	EM80 115V	EM80 230V AUS	EM80 230V INTL	
ITEM	230V HTR	460V HTR	230V HTR	230V HTR	DESCRIPTION
1	55449	55449	55449	55449	DOOR CLOSURE ASSY
2	59963	59963	61803	61803	PUMP ASSY IEC
3	8939	8939	8939	8939	CYLINDER
4	59650	59650	61804-01	61804-02	CONTROL BOX
5	56640-03	56641-02	56640-02	56640-02	HEATER MODULE
6	01205	01205	01205	01205	BRUSH
7	03500	03500	03500	03500	UPPER ROLLER
8	01158	01158	01158	01158	ROLLER, RH
9	8840	8840	8840	8840	ROLLER, LH
10	04294	04294	04294	04294	PULL RING PLUNGER

CONTROL BOX ASSEMBLY
(59650 115V ELEC)

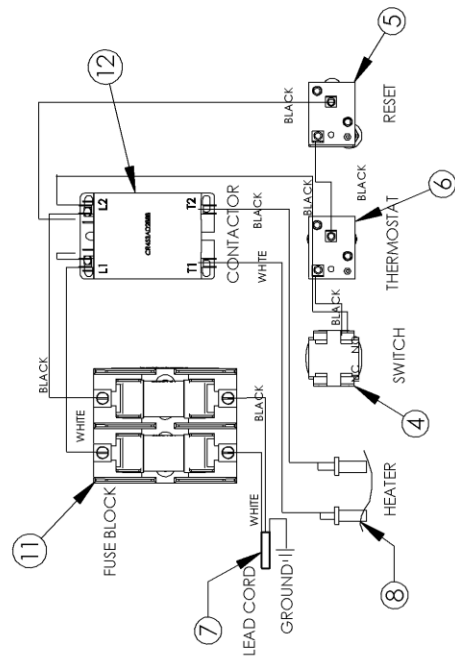
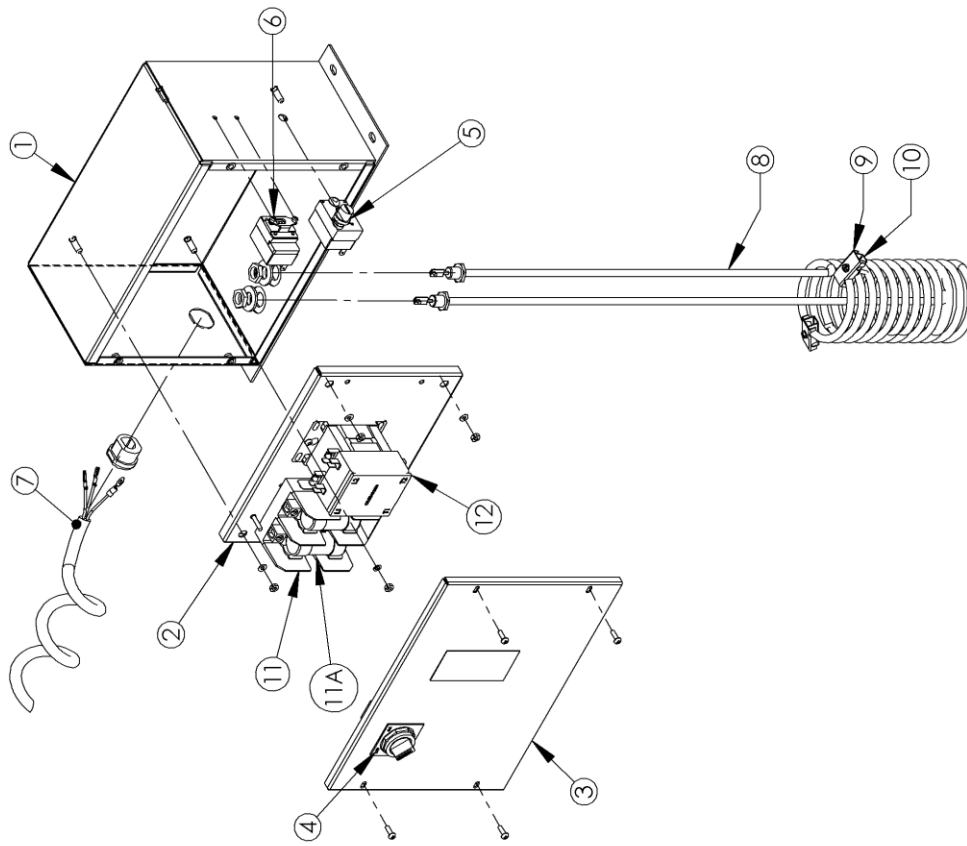


CONTROL BOX ASSEMBLY
(61804 230V ELEC)



	115V	230V AUS	230V INTL	
ITEM	59650	61804-01	61804-02	DESCRIPTION
1	01122	01122	01122	SWITCH
2	58531	58531	58531	SPEED CONTROL ASSEMBLY
3	59756	59756	59756	3 POS SWITCH ASSEMBLY
4	59757	59757	59757	REGULATOR ASSEMBLY
5	56968	56968	56968	NOT VALVE ASSEMBLY
6	58387	58387	58387	FILTER/REGULATOR ASSEMBLY
7	59656	61802-02	04968	POWER CORD
8	01132	04732	04732	RECEPTACLE

230V HEATER MODULE 56640



56640 INSTR
REV 8-10-06

460V HEATER MODULE
56641

56641 INSTR
8-10-06

1 2 3 4 5 6 7 8 9 10 11 12 13 14 15

LEAD CORD
FUSE BLOCK (01802)
CONTACTOR
FUSE BLOCK (02269)
RECEPTACLE
THERMOSTAT
SWITCH
HEATER

12-10-13
ECN 3892

230V HEATER MODULE

ITEM #	56640-01	56640-02 INTERNATIONAL	QTY	DESCRIPTION
1	56636	56636	1	HEATER BOX
2	56637	56637	1	PANEL
3	56638	56638	1	COVER
4	8871	8871	1	SWITCH
5	01041	01041	1	RESET, 140F
6	9039 @ 110	62139 @ 105	1	THERMOSTAT
7	57353	61857	1	POWER CORD, 10/3
8	01807	01807	1	HEATER, 220V
9	55644	55644	2	PROBE CLIP TOP
10	55645	55645	2	PROBE CLIP BOTTOM
11	01208	01208	1	FUSE BLOCK
11a	01207	01207	2	FUSE, 600V, 35A
12	01206	01206	1	CONTACTOR

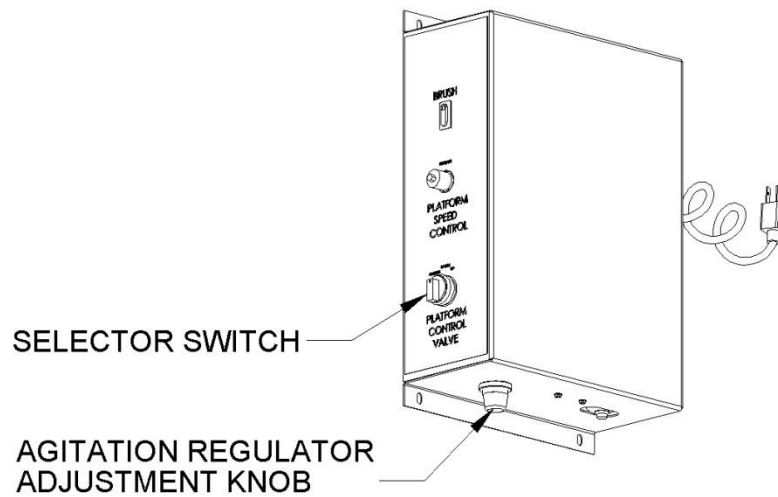
460V HEATER MODULE

ITEM #	56441-01	56441-02	QTY	DESCRIPTION
1	57341	57341	1	HEATER BOX
2	57342	57342	1	PANEL
3	57345	57345	1	COVER, HEATER BOX
4	8871	8871	1	SWITCH, 2 POSITION
5	01041	01041	1	RESET, 140F
6	9039 @110	62139 @105	1	THERMOSTAT
7	01209	01209	1	POWER CORD 10/3
8	57344	57344	1	RECEPTACLE
9	01806	01806	1	HEATER, 480V 6000W
10	55644	55644	2	PROBE CLIP TOP
11	55645	55645	2	PROBE CLIP BOTTOM
12	01802	01802	1	FUSE BLOCK
12a	01800	01800	2	FUSE, 600V, 20A
13	02269	02269	1	FUSE BLOCK
13a	02270	02270	2	FUSE, 500V, 2AMP
14	57343	57343	1	TRANSFORMER
15	01805	01805	1	CONTACTOR

NOTICE:

THIS MACHINE IS PRESET AT THE FACTORY TO OPERATE WITH A MINIMUM OF 100 LBS ON THE AGITATION PLATFORM. IF YOU INTEND TO OPERATE THE MACHINE WITH LOADS LESS THAN 100 LBS, YOU WILL NEED TO LOWER THE PRESSURE SETTING ON THE AGITATION REGULATOR ON THE BOTTOM OF THE CONTROL BOX.

1. Place a typical load on the platform.
2. Turn the selector switch to agitate.
3. Pull out on the adjustment knob on the agitation regulator.
4. Rotate the agitation regulator adjustment knob counter clockwise until the lift begins to agitate.
5. Push in the adjustment knob on the regulator to lock the setting.



AL80AQ TROUBLESHOOTING

HEATER DOES NOT HEAT

POSSIBLE CAUSE	FIX
- NO POWER TO THE UNIT	- APPLY POWER
- SWITCH NOT TURNED ON	- TURN ON SWITCH
- RESET TRIPPED	- PRESS THE RESET BUTTON
- FUSE BLOWN	- REPLACE THE FUSE

INCORRECT TEMPERATURE

POSSIBLE CAUSE	FIX
- BAD THERMOSTAT	- REPLACE THE THERMOSTAT

NO AGITATION

POSSIBLE CAUSE	FIX
- NO AIR CONNECTED TO MACHINE	- CONNECT A 120PSI 10CFM AIR SUPPLY
- TOO MUCH WEIGHT ON LIFT	- REMOVE WEIGHT
- SPEED CONTROL TURNED OFF	- ADJUST AGITATION SPEED
- CRIMPED AIR LINE	- CHECK AIR LINES & REMOVE STRAIGHTEN

AGITATES AT TOP OF STROKE

POSSIBLE CAUSE	FIX
- NOT ENOUGH WEIGHT ON LIFT	- ADD WEIGHT
- WRONG AGITATION PRESSURE	- ADJUST THE REGULATOR ATTACHED TO THE BOTTOM OF THE UP/DOWN/AGITATE SWITCH

AGITATES BOTTOMS OUT

POSSIBLE CAUSE	FIX
- TO MUCH WEIGHT ON LIFT	- REMOVE SOME WEIGHT
- WRONG AGITATION PRESSURE	- ADJUST THE REGULATOR ATTACHED TO THE BOTTOM OF THE UP/DOWN/AGITATE SWITCH
- NOT ENOUGH AIR	- CHECK INCOMING AIR SUPPLY SHOULD HAVE 10CFM @ 120PSI

NO FLOW FROM BRUSH

POSSIBLE CAUSE	FIX
- POWER CORD NOT PLUGGED IN	- PLUG IN POWER CORD
- SWITCH NOT TURNED ON	- TURN ON SWITCH
- INLET TO PUMP CLOGGED	- UNCLOG PUMP

LIMITED WARRANTY AND LIMITATION OF REMEDIES AND DISCLAIMER. (1) Fountain Industries "Fountain" warrants the Equipment to be free from defects in material and manufacture and to conform to specifications for the Equipment at the time of shipment. This warranty is applicable only if the Equipment is installed, operated and maintained in accordance with factory recommendations and procedures. If any Equipment fails to conform to the specifications or samples or any defect in material or manufacture appears within twelve (12) months from the date of initial purchase by end user Fountain's entire liability, and Customer's exclusive remedy, shall be, to either repair or replace such defective Equipment, at Fountain's option, within a reasonable time after written notification thereof and return of the defective Equipment to Fountain.

(2) THIS WARRANTY IS MADE IN LIEU OF ALL OTHER WARRANTIES, EXPRESS OR IMPLIED, INCLUDING, BUT NOT LIMITED TO, THE IMPLIED WARRANTY OF MERCHANTABILITY, THE IMPLIED WARRANTY OF FITNESS FOR A PARTICULAR PURPOSE, ANY IMPLIED WARRANTY ARISING OUT OF COURSE OF DEALING OR OF PERFORMANCE, CUSTOM OR USAGE OF TRADE EXCEPT OF TITLE AND AGAINST PATENT INFRINGEMENT.

(3) LIMITATION OF LIABILITIES; TIME LIMIT FOR FILING ACTION. NEITHER PARTY SHALL UNDER ANY CIRCUMSTANCES BE LIABLE TO EACH OTHER FOR DAMAGES OF ANY KIND, INCLUDING, WITHOUT LIMITATION, DIRECT, INDIRECT, INCIDENTAL, SPECIAL OR CONSEQUENTIAL DAMAGES (INCLUDING, BUT NOT LIMITED TO, LOSS OF PROFITS, REVENUE OR BUSINESS) RESULTING FROM OR IN ANY WAY RELATED TO THE EQUIPMENT, ANY OF CUSTOMER'S PURCHASE ORDERS, THESE TERMS AND CONDITIONS OR THE TERMINATION OR NONRENEWAL THEREOF.

FOUNTAIN'S LIABILITY ON ANY CLAIM OF ANY KIND (INCLUDING NEGLIGENCE) FOR ANY LOSS OR DAMAGE ARISING OUT OF OR RESULTING FROM THIS AGREEMENT, OR FROM THE PERFORMANCE OR BREACH THEREOF, OR FROM THE EQUIPMENT FURNISHED HEREUNDER SHALL IN NO CASE EXCEED THE PRICE OF THE SPECIFIC EQUIPMENT WHICH GIVES RISE TO THE CLAIM. ALL SUCH LIABILITY SHALL TERMINATE UPON THE EXPIRATION OF THE WARRANTY PERIOD AS STATED HEREIN.

This limitation applies regardless of whether such damages are sought based on breach of contract, negligence, strict liability in tort or any other legal theory.

(4) Any action for breach of warranty or any other obligation under these Terms and Conditions must be commenced within one year from the purported date of breach.

(5) Each limitation on liability or remedy set forth in these Terms and Conditions is independent of any other limitation or if they are otherwise held to be unenforceable, that shall not affect the validity of any other such limitation or remedy.

Fountain assumes no liability for any claims for injury or damages to persons or property arising from any chemical manufactured by Customers or by third party vendors for use in Fountain's equipment.

Terms or conditions contained in any Customer purchase order or similar document that in any manner purport to alter, modify, change, or suspend these terms shall be deemed excluded from such purchase order and waived by the Customer.

This limited warranty does not cover or include consumable/wearable associated with such equipment.

Fountain assumes no liability for any unauthorized modifications carried out to the equipment not strictly recommended by the factory procedures.

This limited warranty is not transferable, and does not cover general equipment maintenance, demonstration, installation, routine servicing, calibration or customization of the equipment.

No person is authorized to alter or extend this limited warranty unless made in writing and signed by an authorized officer of Fountain.



Fountain Industries LLC
922 East 14th St.
Albert Lea, MN 56007

Tel: 800-328-3594
507-373-2351
Fax: 507-373-7404

Email: CS@FTNLLC.COM
Website: WWW.FOUNTAININDUSTRIES.COM